

Connection Technology with Staples

For the safe and stable carton closing seal and the economical alternative to conventional techniques, as screws, rivets, ...

Automobile Industry



Vehicle bottom

Connecting of synthetic material parts with sheet aluminiums.
independent of environmental conditions
Replaces rivets and screws



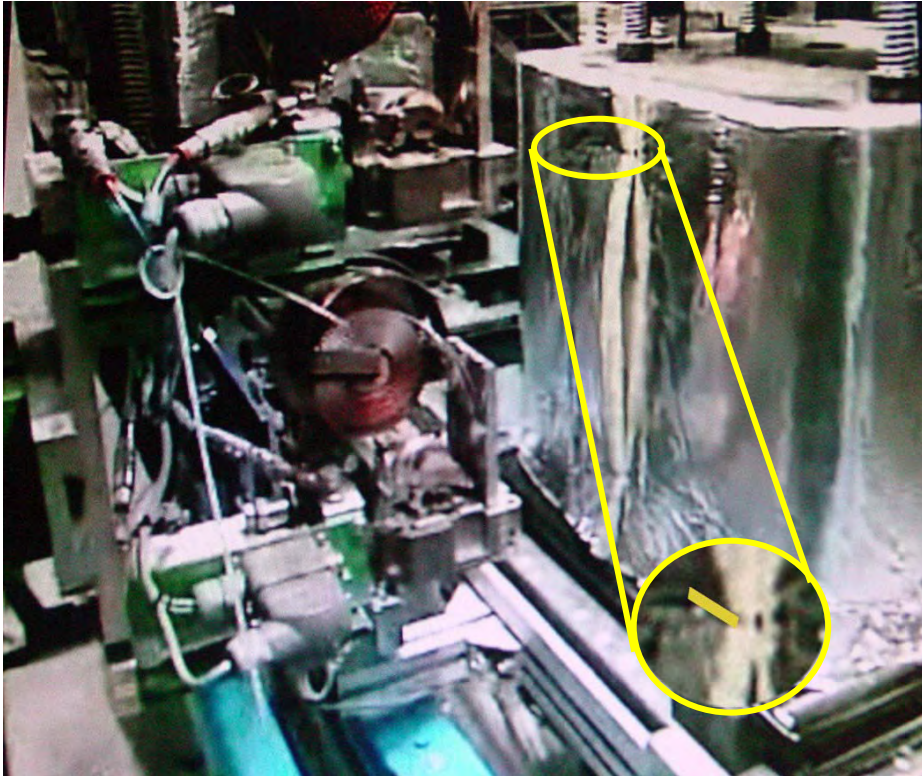
Vehicle Spoiler

Modern Stapling Heads



Connection Technology with Staples

Housekeeping Industry



Fixing of heat isolation cover within an oven with staples

Steel Meshwork



Fixing of a steel meshwork on a steel wire with staples



Heftsystem

Viniculture

Connection Technology with Staples



Connecting of two cords

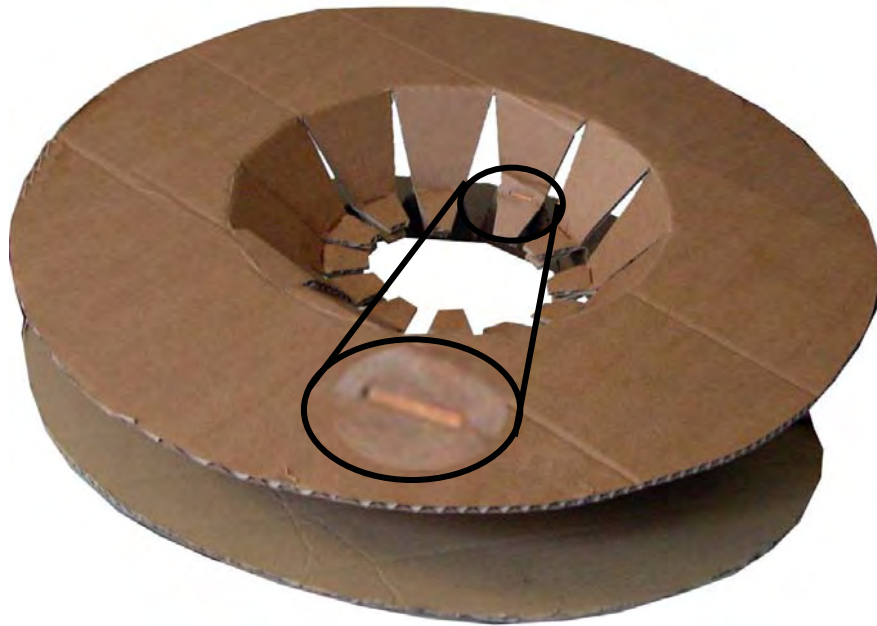
Pallet Nailing



Nailing of foil and/or cardboard into wooden pallets

Connection Technology with Staples

Cable Drum



Connection of two Card board layers for a cable drum

Carton Closing



Stapling of filled boxes, e.g. with blind stapling.
Applicable to prevent from burglary

Connection Technology with Staples

Stapling technology is an approved technology which is used since a long time in the area of connection technology. Typical applications are stapling (with counter-anvil), blind stapling (special applications without counter-anvil) and to nail with staples.

More and further special applications with staples join the traditional carton closing. New developments allow the stable and durable connection with staples of the most different Materials in a simple and economical way.

Standard technologies, e.g. screwing, threading, riveting, gluing require extensive preparation (e.g. pre-drilling, threading, tolerances), as well as are dependent on the environmental conditions (e.g. cold, heat, humidity).

Staples do not need extensive preparations but can often be used to be stapled through these materials to be connected.

Moreover, staples are independent of environmental conditions, e.g. temperatures, humidity and saltwater in which the material of the staple is adapted to the application purpose.

Another advantage is the theft protection, a quality of the staple which can be not removed and reinserted without this being visible.

These advantages make the staple a competent partner for many applications.

All materials to be connected come onto the test bed.

Using of staple is frequent advantageously.

E.g. synthetic materials, synthetic material plates, thin metals made of steel and aluminium, wire meshes, isolating mats and natural also cardboard boxes, corrugated cardboards, full cardboard, can be connected.

Examples:

- Oven heat isolation
- Viniculture: Connecting cords
- Vehicle manufacturing: plastic boards with thin aluminium sheets
- Connecting a steel meshwork on a steel wire with staples

